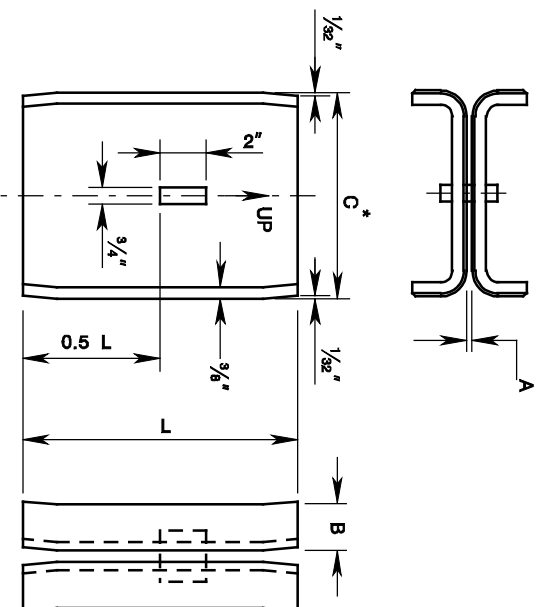


STEEL PILE SPLICE, ALTERNATE 2 (SHEET 1 OF 2)

ISSUED: 2009

PLATE
3.11-4



| DETAIL OF STEEL BEARING H-PILE SPLICER | | | | | | |
|--|-----------------|--------------------|--|---------|----------|---------|
| HP-PILE | | | SPLICER SLEEVE-3/8" THICK ASTM A36 STEEL | | | |
| NOMINAL SIZE (IN.) | WEIGHT LBS./FT. | METAL THICK. (IN.) | A (IN.) | B (IN.) | C* (IN.) | L (IN.) |
| 14 | 117 | 13/16 | 19/16 | 2 3/4 | 12 7/16 | 16 |
| 14 | 102 | 11/16 | 19/16 | 2 3/4 | 12 7/16 | 16 |
| 14 | 89 | 5/8 | 11/16 | 2 3/4 | 12 7/16 | 16 |
| 14 | 73 | 1/2 | 5/8 | 2 3/4 | 12 7/16 | 16 |
| 12 | 84 | 11/16 | 3/4 | 2 1/2 | 10 9/4 | 14 |
| 12 | 74 | 5/8 | 11/16 | 2 1/2 | 10 9/4 | 14 |
| 12 | 63 | 1/2 | 5/8 | 2 1/2 | 10 3/4 | 14 |
| 12 | 53 | 7/16 | 1/2 | 2 1/2 | 10 3/4 | 14 |
| 10 | 57 | 9/16 | 5/8 | 2 | 8 3/4 | 12 |
| 10 | 42 | 7/16 | 1/2 | 2 | 8 3/4 | 12 |
| 8 | 36 | 7/16 | 1/2 | 1 3/4 | 7 | 10 |

* TOLERANCE 1/16" ±